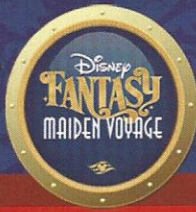


PERSONAL NAVIGATOR



Sunrise: 6:39 a.m. Sunset: 7:03 p.m.
 Evening Attire: Pirate/ Cruise Casual
 All Ashore: Approx. 9:30 a.m.
 All Aboard: 6:15 p.m.
 Tuesday: Sunny High: 81°F/27°C
 Wednesday: Partly Sunny High: 84°F/29°C

TUESDAY, APRIL 3, 2012

COZUMEL

© 2011 DISNEY ENTERPRISES, INC. ALL RIGHTS RESERVED.

Movie Special

Join Alan Bergman -
 President of the Walt Disney
 Studios, for a special
 introduction & an exclusive
 sneak peek of what's next for
 the Studios.



JOHN CARTER

DOLBY 3D

Don't forget to collect your exclusive
 John Carter, Disney Fantasy
 Maiden Voyage button upon entry to the
 Walt Disney Theatre.



Walt Disney Theatre, Decks 3 & 4 Forward

5:15 p.m. & 8:15 p.m.

LOST IN OUR WORLD, FOUND IN ANOTHER

Run Time: 2hrs 12mins

Rating - PG-13

Cozumel Port Information

Cozumel, Mexico is an invigorating port of call on a Caribbean Cruise vacation. An island and a city off the eastern coast of Mexico's Yucatan Peninsula, Cozumel is known for some of the world's healthiest coral reefs and rarest natural recreation. This island in the Caribbean Sea is an extremely popular destination for scuba-diving and snorkeling enthusiasts.

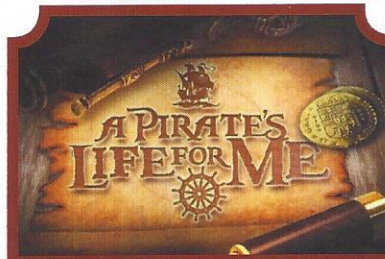
They considered the site sacred to the Moon Goddess, Ixchel, and women would make regular pilgrimages there to pay tribute and to wish for fertility in return.

The arrival of the Spanish in 1518 brought disease and devastation, nearly wiping out the Mayans and leaving the island all but deserted by 1570. It was an outpost for pirates until 1848, when warfare in the Yucatan drove refugees to settle there. A boom in visitors to the island came after 1959, when the famed Jacques Cousteau publicized Cozumel's coral reefs as among the best in the world for scuba diving.

Today, Guests can let their imaginations take flight in the island the Mayans named Cozumel—the "Island of the Swallows"—so long ago.

DOCKING

The ship will dock at the Punta Langosta pier. The pier is located downtown, with walk off access right into the city of Cozumel.



A PIRATE'S LIFE FOR ME

Calling all Pirates, we be! If ye have an adventurous spirit or pirate savvy, come spin the "Wheel of Destiny", fer a treasure trove of fun be ripe for the takin' in this action packed pirate game show.

6:30 & 9:45 p.m.
 D Lounge,
 Deck 4, Midship

Don't Miss:

Live Mariachi Band

3:00 & 4:00 p.m., Decks 11 & 12, Midship
 5:15 p.m., Lobby Atrium, Deck 3, Midship
 Join our live Mariachi Band as they play authentic Mexican music for your listening pleasure.

Pirate Trivia

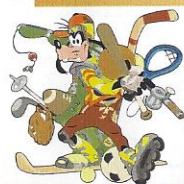
4:00 p.m., D Lounge, Deck 4, Midship
 Test your nautical knowledge with your Cruise Staff in this fun Pirate Trivia.

Partner Playoff

7:15 p.m., O'Gills Pub (18+), Deck 4, Aft
 Sports Trivia with a Disney twist! A unique, fast paced game when you start out by competing against your partner, and then finish by teaming up with them to beat those other guys!

Krazy Karaoke

11:00 p.m., The Tube (18+), Deck 4, Aft
 Take to the stage, grab a microphone and sing your favorite song with your Club Host, Max and, DJ Brandon.



Sport's Simulators

Digital sports simulators are available at Goofy's Sports Deck on Deck 13, Aft. This state-of-the-art virtual sports experience includes golf, basketball, baseball, hockey and soccer. Book now at the Port Adventures Desk, Deck 5, Midship.

DINNER MENU

Animator's Palate: Pirate's Menu
 Enchanted Garden: Pirates Menu
 Royal Court: Pirates Menu

DRINK OF THE DAY

Pirate's Treasure (Alcoholic)
 Princess Delight (Non Alcoholic)

IMPORTANT NUMBERS

Fire/Security: 7-3001
 Medical Emergency: 7-3000
 Health Center: 7-1923

FAMILY ACTIVITY HIGHLIGHTS

LIVE MARIACHI BAND

Decks 11 & 12, Midship - 3:00 & 4:00 p.m.

Lobby Atrium, Deck 3, Midship - 5:15 p.m.

Join our live Mariachi Band as they play authentic Mexican music for your listening pleasure.

PIRATE TRIVIA

D Lounge, Deck 4, Midship - 4:00 p.m.

Test your nautical knowledge with your Cruise Staff in this fun Pirate Trivia.

A PIRATE'S LIFE FOR ME

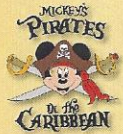
D Lounge, Deck 4, Midship - 6:30 & 9:45 p.m.

Calling all Pirates, we be! If ye have an adventurous spirit or pirate savvy, come spin the "Wheel of Destiny", for a treasure trove of fun be ripe for the takin' in this action packed pirate game show.

ROB THOMPSON ON GUITAR

Deck 12, Forward - 7:15, 8:05, 9:45 & 11:30 p.m.

Join Rob Thompson as he plays live for your listening pleasure under the stars this evening.



MICKEY'S PIRATES IN THE CARIBBEAN

Deck Stage, Deck 11, Midship - 7:45 p.m.

It's a Pirate Celebration, me hearties! Come experience all the pirate fun alongside Captain Mickey Mouse and his famous Pirate Crew. Play, dance and acquire all pirate skills needed to become an official member of Mickey's Pirate Crew!



ADULT ACTIVITY HIGHLIGHTS



SENSES SPA SEMINARS

Sunrise Stretch - Senses Fitness Center 7:00 a.m.

Fab Abs - Senses Fitness Center 7:30 a.m.

Pathway to Yoga - Senses Fitness Center 4:00 p.m.

LIVE MUSIC WITH FINE WHINES

La Piazza, Deck 4, Aft - 7:15, 9:30 & 11:15 p.m.

Join Fine Whines as they play live for your listening pleasure this evening in La Piazza.



PARTNER PLAYOFF

O'Gills Pub, Deck 4, Aft - 7:15 p.m.

Sports Trivia with a Disney twist! A unique, fast paced game when you start out by competing against your partner, and then finish by teaming up with them to beat those other guys!



CLUB 18*21 MIXER


O'Gills Pub, Deck 4, Aft - 10:00 p.m.

Club 18*21 is an exclusive gathering for young adult Guests. Come meet some of your fellow cruisers and share stories of your cruise thus far, before we head up on deck for Buccaneer Blast and Club Pirate.

KRAZY KARAOKE



The Tube, Deck 4, Aft - 11:00 p.m.

Take to the stage, grab a microphone and sing your favorite song with your Club Host, Max and, DJ Brandon.



Sports Trivia with a Disney twist! A unique, fast paced game when you start out by competing against your partner, and then finish by teaming up with them to beat those other guys!

**O'Gills Pub (18+),
Deck 4, Aft
7:15 p.m.**



Take to the stage, grab a microphone and sing your favorite song with your Club Host, Max and, DJ Brandon.

**The Tube (18+),
Deck 4, Aft
11:00 p.m.**

YOUTH ACTIVITIES HIGHLIGHTS

DINE & PLAY

A convenience for families dining at 8:15 p.m., our Youth Activities Counselors will be available at 9:15 p.m. at the entrance of Royal Court, Enchanted Garden and Animator's Palate dining rooms to bring registered children to join the fun in the Youth Activity areas.

CLUBHOUSE KIDS

Is a structured play time offered during secured programming, and is recommended for children ages 3-7. During Clubhouse Kids time in the Oceaneer Club, Counselors will be able to interact and encourage the youngest cruisers in specific activities, ensuring they are engaged.



Deck 5 Midship (7-1440) 9:00 a.m. - 10:00 p.m.

JOURNEY TO NEVERLAND

9:15 a.m.

Join Peter Pan as he takes you on an adventure on the Magic Playfloor.

LITTLE EINSTEIN'S

2:00 p.m.

Your junior cruiser will have the time of their lives with this program inspired by their favorite show with fun activities guaranteed to make them feel like a little genius!



Deck 5 Midship (7-1445) 9:00 a.m. - 1:00 a.m.

PISTON CUP

9:30 a.m.

It's Dinoco time and you're part of the pit crew! Design your own racecar and see if you've got what it takes to end up in the Winner's Circle!

SUPER SLOPPY SCIENCE - GASSES & GOOS

1:30 p.m.

Join Professor Make-O-Mess in some of the most extreme experiments you will ever see in the world of Super Sloppy Science!



Deck 13 Midship (41-14426) 10:00 a.m. - 1:00 a.m.

A PIRATES LIFE FOR ME

11:45 p.m. - D Lounge

Calling all Pirates, we be! If ye have an adventurous spirit or pirate savvy, come spin the "Wheel of Destiny", fer a treasure trove of fun be ripe for the takin' in this action packed pirate game show.



Entrance on Deck 4 Forward (7-9418)

1:00 p.m. - 2:00 a.m.

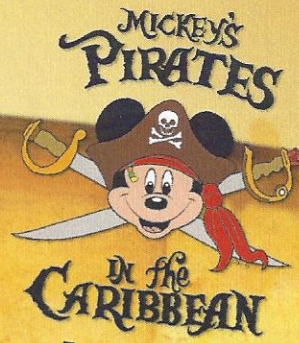
ESPN DREAM TEAM DRAFT DAY

6:00 p.m.

Play ball! Join the "Commissioner" and engage in this interactive fantasy baseball draft unlike anything you've ever seen! Can YOU draft the greatest baseball team of All-Time?

YOUTH ACTIVITIES OPEN HOUSE

Open House is an opportunity for all to come and participate in a variety of exciting activities and free time in the Oceaneer Club, Lab, Edge & Vibe throughout the cruise. During these times secured programming will still be offered in the other venue for those looking to check their children into care.



7:45 - 8:05 p.m.

Pirate Games start at 7:30 p.m.
Deck Stage

It's a Pirate Celebration, me hearties!
Come experience all the pirate fun alongside Captain Mickey Mouse and his famous Pirate Crew.
(Weather Permitting)

Buccaneer Blast Fireworks

What's a pirate party without some fireworks to remind the other ships who be ruling the oceans blue?

10:30 pm
Deck Stage

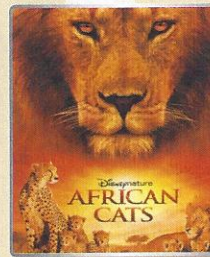
Fireworks will be on display Starboard side
Seen best from Deck 11, center pool area, and on Deck 12.

Club Pirate

If ye be a fan of Pirates of the Caribbean, tis time to revel in the night at the hottest dance club in all the seven seas with Guest DJ Z
(Immediately following Buccaneer Blast)

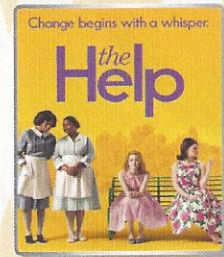
BUENA VISTA THEATRE

Today's Movies



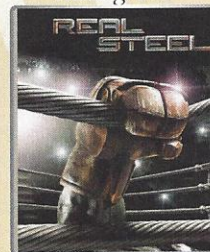
12:00 p.m.

Run Time: 1 hr 29 mins
Rating: PG



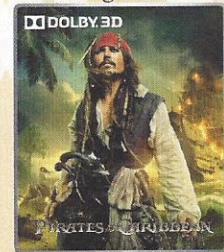
2:00 p.m.

Run Time: 2 hr 26 mins
Rating: PG-13



5:15 & 8:00 p.m.

Run Time: 2 hr 07 mins
Rating: PG-13



11:00 p.m.

Run Time: 2 hr 16 mins
Rating: PG-13

MORE TO ENJOY WHILE ONBOARD

ONBOARD AIRLINE CHECK IN

If you would like to have your boarding passes printed for you onboard and have your luggage taken to the airport for you, register before tomorrow. If you have Disney Cruise Line airport transfer to Orlando International Airport and fly with one of the participating airlines Please stop at Guest Services, Deck 3, Midship.



PORT & SHOPPING INFORMATION

Port & Shopping Guides Johan & Marissa will be on the gangway from 9:30 to 10:30 a.m. to answer any last minute Cozumel shopping questions. Don't forget your Shopping Maps, VIP Cards & Shopping Coupons! Check your Shopping Maps for all of the shopping events going on ashore today.

DISNEY VACATION CLUB®

Want to learn more about taking magical vacations year after year? Please see a Disney Vacation Club representative on Deck 4, Midship, or call 7-2805 from your stateroom phone for more information about our group presentations.



SURF @ SEA

\$0.75 per minute, or save money by buying blocks of time. \$55.00 for 100 minutes, \$100.00 for 250 minutes and \$150.00 for 500 minutes. Wireless information sheets are available at Guest Services, Deck 3, Midship. *Please note: Due to satellite connectivity, onboard internet service will be noticeably slower than you may be accustomed to and may at times be interrupted or unavailable.*

ON DEMAND TV

Watch Disney movies, Hollywood features, ABC Shows, and even captioned content, plus much more "On Demand" for FREE in the comfort of your stateroom! Bookmark your movie and come back to watch it later. Press MENU on your stateroom television remote control, and follow the prompts.

ENJOYING THE CRUISE? BOOK ANOTHER ONE TODAY!

Today is a great day to visit the Future Cruise Sales Desk, Deck 4 Midship, or call 7-2848 to find out how you can save 10%, receive up to a \$200 onboard credit, and pay a reduced deposit on your next cruise! Tune to Channel 8 for details.



Disney Cruise Line. PORT ADVENTURES

Hola! We have arrived at the island paradise of Cozumel just off the coast of Mexico. This is the perfect day to enjoy the beach on Cozumel or take a tour to visit the ancient Mayan ruins of Tulum on the Mexican mainland. There is a myriad of options so make sure to book your place at the Port Adventures Desk, Deck 5, Midship.

Please check your tour tickets for meeting times and locations. Visit the Port Adventures Desk, Deck 5, Midship, for any questions.

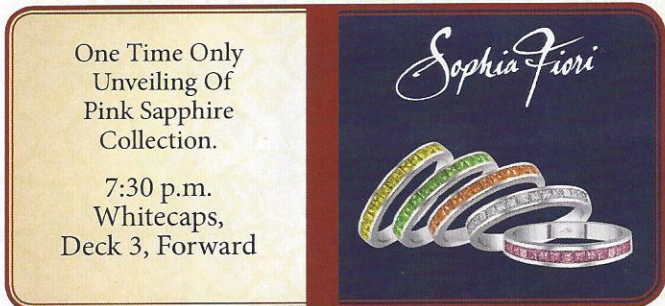


SENSES SPA & SALON

PAMPER PACKAGE

- 50 minute Full Body Massage
- Foot & Ankle Massage
- Indian Scalp Massage
- 25 Minute Booster Facial

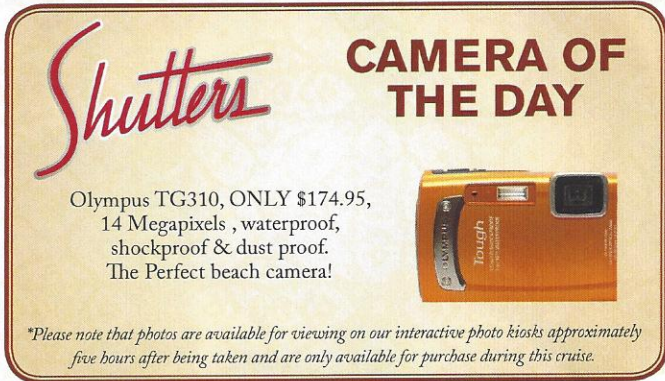
ONLY \$149.00
Call Senses Spa & Salon, 7-1465



One Time Only Unveiling Of Pink Sapphire Collection.

7:30 p.m. Whitecaps, Deck 3, Forward

Sophia Fiori



Shutters

CAMERA OF THE DAY

Olympus TG310, ONLY \$174.95, 14 Megapixels, waterproof, shockproof & dust proof. The Perfect beach camera!

**Please note that photos are available for viewing on our interactive photo kiosks approximately five hours after being taken and are only available for purchase during this cruise.*

SHOPPING

LIMITED EDITION MERCHANDISE RANDOM SELECTION PROCESS

Please check your allotted time for you to collect your merchandise outside Sea Treasures, Deck 3, Forward.

PINK SAPPHIRE UNVEILING

The color of love and to love color, Pink Sapphires have stunning color, but at affordable prices. Patent designs with Pink Sapphires is a great way to start your Sophia Fiori collection at exceptional duty and tax free savings. Whitecaps, Deck 3, Forward 7:30 p.m.

CHAMPAGNE FOR EVERYONE

Exclusive to the Disney Fantasy, Ooh La La and Swarovski Champagne available to purchase in Whitecaps, Deck 3, Forward.

PIRATE PARTY GEAR

Arrrh... It's time to embrace your inner pirate! Make your way to Mickey's Mainsail, Deck 3, Forward, to find a treasure trove of Pirate gear! Everything from costumes and apparel to hats and accessories.

PREMIUM SPIRITS

For those who like to taste the finer things in life, join us to preview our extensive collection of premium Spirits. All at Duty Free pricing!! Whitecaps, Deck 3, Forward.

Due to port regulations, when the ship is docked, the stores will remain closed.

IMPORTANT INFORMATION

Security Notice

All Guests (including children) who wish to disembark the ship are required to present their Key to the World card at the gangway. A photo ID is also required for those Guests who are 18 years of age or older. Guests under the age of 18 are required to have a Parent, Guardian or other responsible adult sign an authorization form at the time it is given out if they wish to go ashore unaccompanied. Authorization forms are available at the gangways and Guest Services.

Cold and Flu Reminder

Please wash hands frequently and thoroughly; particularly before meals. Contact the Health Center by dialing 7-1923, should anyone in your party become ill.

Corridor Quiet Hours

As a courtesy to all our Guests, please recognize quiet hallway hours from 10:00 p.m. til 8:00 a.m.

Inclement Weather

For the safety of all Guests, outdoor events may be changed due to unforeseen weather conditions.

Environmental Message

With Disney's commitment to the Environment, please refrain from throwing anything over the Ship's side. Thank you!

No Reserved Seats Policy

As a courtesy to all our Guests, we kindly advise that the saving of seats is not permitted in the Walt Disney Theatre, and the saving of the sun loungers is not permitted on Deck 11, 12, and 13. Items left unattended will be returned to lost and found at Guest Services, Deck 3 Midship.

Smoking

For the comfort of our guests the following areas are designated as Smoking areas: - Promenade Deck (Deck 4), smoking is permitted Port Side, Aft only from 6:00 p.m. to 6:00 a.m.

- Currents - Deck 13, Forward, Port Side.
- Meridian Bar - Deck 12, Aft, Port Side, outside.
- Smoking is permitted on stateroom verandahs. Smoking is prohibited inside all guest staterooms. Guests found smoking in their staterooms will be charged a \$250 stateroom recovery fee.

Walt Disney Theatre

Theatrical performances may use artificial fog, strobe lights, pyrotechnics and other special effects. For the safety of our performers and the comfort of those around you, the use of any photography, video recording device or any electronic equipment is prohibited.

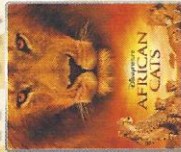
Verandah Safety

Please do not leave any combustible materials on your balcony when not present in your stateroom for safety reasons.

DF/BD/7W/001/3.11.12/NCA/©DISNEY

TUESDAY, APRIL 3, 2012 - COZUMEL

BUENA VISTA THEATRE



12:00 p.m.
Run Time: 1 hr 29 mins
Rating: PG



2:00 p.m.
Run Time: 2 hr 26 mins
Rating: PG-13



5:15 & 8:00 p.m.
Run Time: 2 hr 07 mins
Rating: PG-13



11:00 p.m.
Run Time: 2 hr 16 mins
Rating: PG-13

Character Appearances

JAKE THE NEVERLAND PIRATE

Deck 4, Midship Balcony - 5:00 p.m.
Deck 4, Midship Balcony - 7:00 p.m.
Deck 4, Midship Balcony - 9:30 p.m.

CHIP & DALE

Lobby Atrium - 5:00 p.m.

MICKEY MOUSE

Lobby Atrium - 5:15 p.m.
Lobby Atrium - 10:00 p.m.

CAPT. JACK SPARROW

Preludes - 5:30 p.m.
Preludes - 7:00 p.m.

CAPT. HOOK & SMEE

Deck 4, Midship Balcony - 5:30 p.m.

MINNIE MOUSE

Lobby Atrium - 5:30 p.m.
Lobby Atrium - 10:00 p.m.

DAISY DUCK

Lobby Atrium - 9:30 p.m.

DONALD DUCK

Lobby Atrium - 9:30 p.m.

GOOFY

Deck 4, Midship Balcony - 10:00 p.m.

For details of daily Disney character appearances, refer to the character line on your Navigator Grid, or the digital character board in the Lobby Atrium.

YOUTH ACTIVITIES THEMED EXPERIENCES

- CLUBHOUSE SERIES** focuses on movement and features content which appeals to younger children.
- STORYBOOK SERIES** is designed with a strong connection to the Disney classic stories.
- JUMP UP! SERIES** includes large ground games & movement-oriented activities.
- CREATE & INVENT SERIES** will have a tactile focus allowing children to create and admire their work.
- IN THE SPOTLIGHT SERIES** focuses on children's stage presence with lots of activities and enthusiasm.
- SOLVE IT! SERIES** are less active, but will challenge children with problem/solutions-based activities.
- OUT & ABOUT SERIES** Set outside secured Youth Activities spaces, very active, appealing to Tweens. Recommended 8 - 14 years

SHIP DIRECTORY

YOUTH ACTIVITIES

DISNEY'S OCEANEER CLUB	DECK 5, MID	9:00 A.M. - 10:00 P.M.
DISNEY'S OCEANEER LAB	DECK 5, MID	9:00 A.M. - 1:00 A.M.
EDGE	DECK 13, MID	10:00 A.M. - 1:00 A.M.
VIBE	DECK 4, FWD	1:00 P.M. - 2:00 A.M.
IT'S A SMALL WORLD NURSERY	DECK 5, MID	9:00 A.M. - 11:00 P.M.

RECREATION

AQUALAB	DECK 12, AFT	9:00 A.M. - 7:00 P.M.
AQUADUCK	DECK 12, MID	9:00 A.M. - 8:00 P.M. 10:45 P.M. - 12:00 MID.
GOOFY'S SPORTS DECK	DECK 12, AFT	8:00 A.M. - 6:00 P.M.
DONALD'S POOL	DECK 11, MID	6:00 A.M. - 6:00 P.M.
GOOFY GOLF	DECK 13, AFT	8:00 A.M. - 10:00 P.M.
GOLF SIMULATORS	DECK 13, AFT	10:00 A.M. - 6:00 P.M.
MIDSHIP DETECTIVE AGENCY	DECKS 2 & 5, MID	9:00 A.M. - 9:00 P.M.
MICKEY'S POOL	DECK 11, MID	6:00 A.M. - 5:30 P.M.
MICKEY'S SLIDE	DECK 11, MID	10:00 A.M. - 6:00 P.M.
NEMO'S REEF	DECK 11, MID	10:00 A.M. - 7:00 P.M.
PORT ADVENTURES DESK	DECK 5, MID	9:00 A.M. - 11:00 A.M. 7:00 P.M. - 8:30 P.M.
QUIET COVE POOL	DECK 11, FWD	6:00 A.M. - 12:00 MID
SATELLITE FALLS	DECK 13, FWD	6:00 A.M. - 6:30 P.M.
SENSES FITNESS CENTER	DECK 11, FWD	6:30 A.M. - 10:00 P.M.
SPORTS SIMULATORS	DECK 13, AFT	10:00 A.M. - 6:00 P.M.

GENERAL INFORMATION

ARR-CADE	DECK 11, AFT	24 HOURS
DISNEY VACATION CLUB DESK	DECK 4, MID	5:00 P.M. - 10:00 P.M.
FUTURE CRUISE SALES DESK	DECK 4, MID	8:00 A.M. - 12:00 P.M. 3:00 P.M. - 10:30 P.M.
GUEST SERVICES	DECK 3, MID	24 HOURS
MEDICAL HEALTH CENTER	DECK 1, FWD	9:30 A.M. - 11:00 A.M. 4:30 P.M. - 7:00 P.M.
PORT & SHOPPING DESK	DECK 4, MID	7:30 P.M. - 8:30 P.M.
PRELUDES	DECK 3, FWD	5:45 P.M. - 6:30 P.M. 8:00 P.M. - 8:45 P.M.
SENSES SPA AND SALON	DECK 11, FWD	8:00 A.M. - 10:00 P.M.
SHOOTERS PHOTO GALLERY	DECK 4, MID	5:00 P.M. - 10:30 P.M.
SHOOTERS DIGITAL	DECK 4, MID	24 HOURS

SHOPPING

BIBBIDI BOBBIDI BOUTIQUE	DECK 5, MID	9:00 A.M. - 2:00 P.M.
PHRATES LEAGUE	3:00 P.M. - 9:00 P.M.	
MICKEY'S MAINSAIL	DECK 3, FWD	7:15 P.M. - 11:00 P.M.
SEA TREASURES	DECK 3, FWD	7:15 P.M. - 11:00 P.M.
VISTA GALLERY	DECK 4, MID	7:15 P.M. - 10:00 P.M.
WHITECAPS	DECK 3, FWD	7:15 P.M. - 11:00 P.M.

DINNER MENUS
Animators' Palate: Pirate's Menu
Enchanted Garden: Pirate's Menu
Royal Court: Pirate's Menu
Dining Times: 5:45pm & 8:15pm

DRINK OF THE DAY
Pirate's Treasure (Alcoholic)
Princess Delight (Non Alcoholic)

WEATHER FORECAST
Tuesday: Sunny High: 80 F/27 C
Wednesday: Partly Sunny High: 84 F/29 C

Evening Attire: Pirate/Cruise Casual

DINING & LOUNGES

Breakfast

CABANAS CONTINENTAL	DECK 11, AFT	7:00 A.M. - 7:30 A.M.
CABANAS	DECK 11, AFT	7:30 A.M. - 10:30 A.M.
ENCHANTED GARDEN	DECK 2, MID	8:00 A.M. - 10:30 A.M.
ROYAL COURT	DECK 3, MID	8:00 A.M. - 9:30 A.M.

LUNCH

CABANAS	DECK 11, AFT	12:00 P.M. - 2:15 P.M.
ROYAL COURT	DECK 3, MID	11:30 A.M. - 1:30 P.M.
FILLMORE'S FAVORITES	DECK 11, MID	11:00 A.M. - 6:00 P.M.
LUIGI'S PIZZA	DECK 11, MID	11:00 A.M. - 6:00 P.M.
TOW MATERS GRILL	DECK 11, MID	11:00 A.M. - 11:00 P.M.

DINNER

ANIMATOR'S PALATE	DECK 3, AFT	5:45 P.M. & 8:15 P.M.
ENCHANTED GARDEN	DECK 2, MID	5:45 P.M. & 8:15 P.M.
ROYAL COURT	DECK 3, MID	5:45 P.M. & 8:15 P.M.
CABANAS TABLE SERVICE	DECK 11, AFT	6:30 P.M. - 8:30 P.M.

LATE NIGHT SNACKS

LUIGI'S PIZZA	DECK 11, MID	9:30 P.M. - 12:30 A.M.
CABANAS PIRATE BUFFET	DECK 11, AFT	10:30 P.M. - 11:15 P.M.

ADDED FEATURES

BEVERAGE STATION	DECK 11, MID	24 HOURS
EYE SCREAM	DECK 11, MID	11:00 A.M. - 11:00 P.M.
ROOM SERVICE	DIAL 0	24 HOURS

ENTERTAINMENT - LOUNGES - BARS

Adults must be 21 and older to consume alcoholic beverages.

BON VOYAGE	DECK 3, MID	11:00 A.M. - 11:00 P.M.
COVE CAFE (18+)	DECK 11, FWD	7:00 A.M. - 12:00 MID.
COVE BAR (18+)	DECK 11, FWD	11:00 A.M. - 12:00 MID.
CURRENTS (18+)	DECK 13, FWD	10:00 A.M. - 12:00 MID.
D LOUNGE	DECK 4, MID	SHOW TIMES
FROZONE	DECK 11, MID	11:00 A.M. - 12:00 MID.
LA PLAZZA	DECK 4, AFT	4:30 P.M. - 12:00 MID.
MERIDIAN (18+)	DECK 12, AFT	5:00 P.M. - 12:30 A.M.
O'GILLS PUB	DECK 4, AFT	3:00 P.M. - 12:30 A.M.
OUTLOOK	DECK 14, MID	SUNSET
OOH LA LA (18+)	DECK 4, AFT	5:00 P.M. - 1:00 A.M.
SKYLINE (18+)	DECK 4, AFT	5:00 P.M. - 1:00 A.M.
THE TUBE (18+)	DECK 4, AFT	10:00 P.M. - 2:00 A.M.
WAVES	DECK 12, AFT	11:00 A.M. - 12:00 MID.
VISTA CAFE	DECK 4, MID	7:30 A.M. - 10:00 P.M.

Consumers who order raw or partially cooked, ready-to-eat food of animal origin, are hereby informed that the food is not sufficiently cooked to ensure its safety.

All Ashore: Approx. 9:30 a.m.
All Aboard: 6:15 p.m.

SHIP'S AGENT IN COZUMEL

ACS (Agencia Consignataria del Sureste),

Calle 6 Norte No. 14 X 10 Y 15 Ave., Cozumel, Q. Roo., Mexico 77660.

Tel. 521-987-873-9490

IMPORTANT NUMBERS
Fire/Security: 7-3001
Medical Emergency: 7-3000
Health Center: 7-1923

DPB/D7W/001/03/31/22/C&D/SHIP

	8:30	8:45	9:00	9:15	9:30	9:45	10:00	10:15	10:30	10:45	11:00	11:15	11:30	11:45	12:00	12:15	12:30	12:45	1:00	1:15	1:30	
FUNNELVISION					A Bugs Life (G) FunnelVision								Toy Story 3 (G) FunnelVision									
MOVIES																	Disney Nature: African Cats (PG) Buena Vista Theatre					
CHARACTER																						
FUN FOR ALL AGES	Shopping Information Gangway																					
ADULTS																						
ADULTS											Friends of Bill W. Outlook											
Vibe											Open House											
Edge	Open House										Mario Brothers											
Oceaneer Lab	Piston Cup																					
Oceaneer Club	Clubhouse Kids										Human Bingo											
Out & About	Open House in Edge																					
											Youth Lunch											
	Journey to Neverland										Parachute Games											
											Jake and the Neverland Pirates											
											Pirate Crafts											
											Science											

Symbol for activities that will be repeated during the cruise

	1:45	2:00	2:15	2:30	2:45	3:00	3:15	3:30	3:45	4:00	4:15	4:30	4:45	5:00	5:15	5:30	5:45	6:00	6:15	6:30	6:45	
FUNNELVISION																						
MOVIES	The Help (PG-13) Buena Vista Theatre										Real Steel (PG-13) Buena Vista Theatre											
CHARACTER											Chip & Dale Lobby Atrium											
FUN FOR ALL AGES											Pirate Trivia D Lounge											
	Live Mariachi Band Decks 11 & 12, Midship										Live Mariachi Band Decks 11 & 12, Midship											
	Origami D Lounge										Live Mariachi Band Lobby Atrium											
ADULTS	Pub Quiz 2 O'Gills Pub										A Pirates Life For Me D Lounge											
ADULTS											Pathway to Yoga Senses Spa & Fitness Center											
Vibe	Video Hunt										Dodgeball											
Edge	Stop the Boat										ESPN Dream Team Draft Day											
Oceaneer Lab	Super Sloppy Science										Stop the Boat											
Oceaneer Club	Little Einstein's										Open House											
Out & About	Dodgeball										A Pirates Life For Me											
	Pirate Crafts										Stitch's Adventure											
	Magic Playfloor										Heffalump Expodishun											
											Youth Dinner											
											Magic Playfloor											
											So You Want To Be a Pirate?											
											Open House											

FOLD

Fold along the dotted lines and take me with you so you don't miss any of the fun!

	7:00	7:15	7:30	7:45	8:00	8:15	8:30	8:45	9:00	9:15	9:30	9:45	10:00	10:15	10:30	10:45	11:00	11:15	11:30	11:45	12:00	
FUNNELVISION											Muppet Treasure Island (G) FunnelVision											
MOVIES	Real Steel (PG-13) Buena Vista Theatre										Pirates of the Caribbean: On Stranger Tides (PG-13) Buena Vista Theatre											
CHARACTER	Jake Dk 4, Midship										Mickey Lobby Atrium											
FUN FOR ALL AGES	Pirate Games Deck Stage										Buccaneers Blast followed by Club Pirate Deck Stage											
	Live Guitar Deck 12, Forward										A Pirates Life For Me D Lounge											
ADULTS	Partner Playoff O'Gills Pub										Club 18*21 Mixer O'Gills Pub											
ADULTS	Live Music with Fine Whines La Piazza										Live Music with Fine Whines La Piazza											
Vibe	Teen AquaDuck										Pump it Up! >11:00pm											
Edge	Tween AquaDuck										Pirate Deck Party											
Oceaneer Lab	Animation Cells										Gaga Ball											
Oceaneer Club	Open House										Scavenger Hunt											
Out & About	Digi Hunt - Meet at Midship Detective Agency, Dk 5										POTC: Tides of Fortune											
	Magic Playfloor										Movie Time											
											Hangin' in the Lab Till' 1:00 a.m.											

FOLD

IN THE SPOTLIGHT SERIES | OUT & ABOUT SERIES | JUMP UP! SERIES | CLUBHOUSE SERIES | SOLVE IT! SERIES | CREATE & INVENT SERIES | STORYBOOK SERIES